

Box Properties

--Description--

Name:

Type: Vented Box

Shape: Prism, square (optimum)

--Box Parameters--

Vb = 3.283 cu.ft

V(total) = 3.559 cu.ft

Fb = 19.91 Hz

QL = 6.506

F3 = 23.29 Hz

Fill = minimal

--Vents--

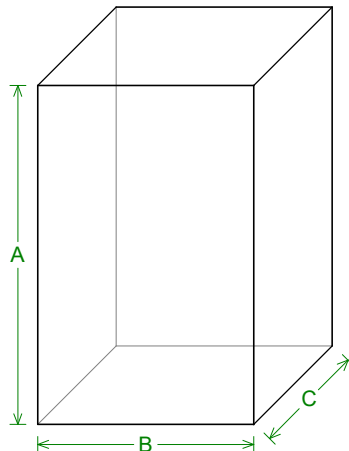
No. of Vents = 2

Vent shape = round

Vent ends = one flared

Dv = 2.75 in

Lv = 22.82 in



--External Dimensions--

A = 31.14 in

B = 19.82 in

C = 13.57 in

--Internal Dimensions--

A = 29.64 in

B = 18.32 in

C = 11.32 in

--Wall Thickness--

Front = 1.5 in

Side = 0.75 in

Driver Properties

--Description--

Name: RSS315HF-4 12"

Type: Standard one-way driver

Company: Dayton Loudspeaker Co.

--Configuration--

No. of Drivers = 1

--Mechanical Parameters--

Fs = 23 Hz

Qms = 3

Vas = 84.95 liters

Cms = 0.114 mm/N

Mms = 421.7 g

Rms = 20.32 kg/s

Xmax = 14 mm

Xmech = 21 mm

P-Dia = 304 mm

Sd = 725.8 sq.cm

P-Vd = 1.016 liters

--Electrical Parameters--

Qes = 0.52

Re = 3.3 ohms

Le = 0.95 mH

Z = 4 ohms

BL = 19.67 Tm

Pe = 400 watts

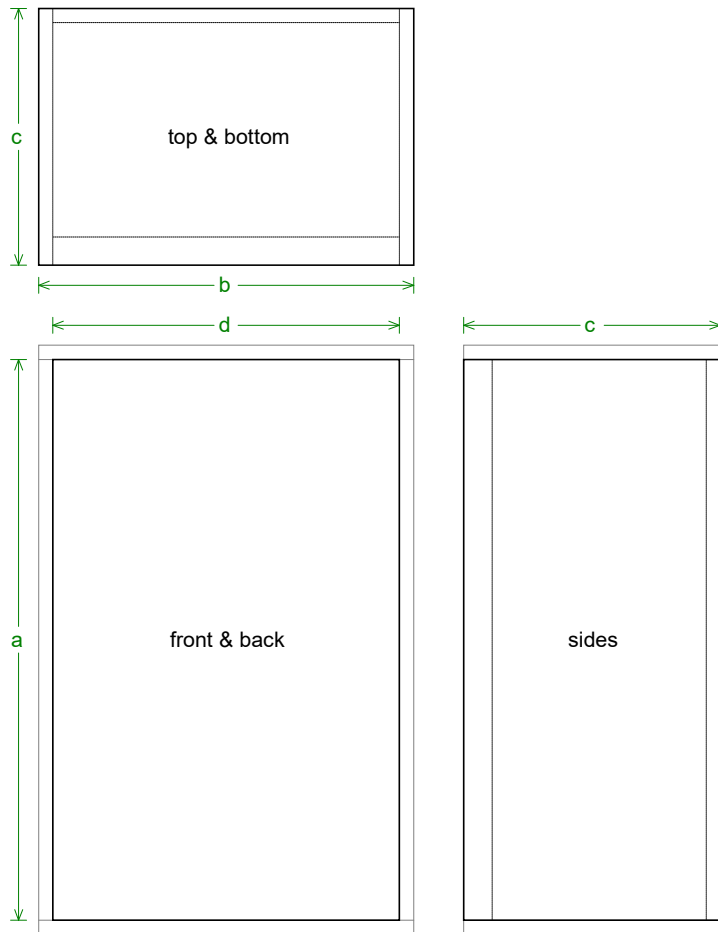
--Electromech. Parameters--

Qts = 0.44

no = 0.192 %

1-W SPL = 84.97 dB

2.83-V SPL = 89 dB



Box Parts

Box Shape: Optimum Square Prism

1 Top, 1 Bottom: depth (c) = 13.57 in
width (b) = 19.82, thickness = 0.75 in

1 Front: height (a) = 29.64 in
width (d) = 18.32, thickness = 1.5 in

1 Back: height (a) = 29.64 in
width (d) = 18.32, thickness = 0.75 in

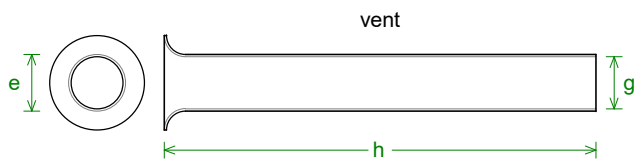
2 Sides: height (a) = 29.64 in
depth (c) = 13.57, thickness = 0.75 in

--Driver Mounting--

Mounting: Flush

--Vent Parts--

2 Ducts: outside diameter (e) = 3 in
inside diameter (g) = 2.75 in
length (h) = 22.82 in



Wiring Diagram

